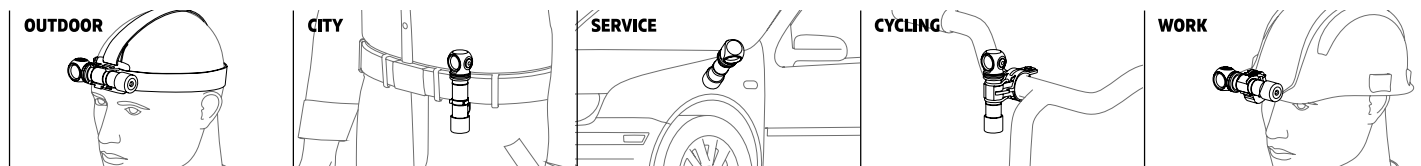




WIZARD C2 PRO

Legendary multi flashlight is now even brighter, more reliable and convenient



Perfect solution for those who are looking for a multifunctional flashlight for different spheres: outdoor activities and sports, fishing and hunting, maintenance and construction. Armytek Wizard multi flashlights have already gained popularity among runners, fishers, hunters, auto mechanics, industrial workers and other professionals around the world.

HEADLAMP

Simple one-hand operation, reliable head-mount for running, solid body without long wires, weak rubber connectors and unnecessary boxes. The flashlight is easily installed, removed and 180° rotatable in the mount. Quick-release rubber ring provides additional fixation.

EVERY DAY CARRY LIGHT

Compact design, convenient side button,

special matt anti-abrasive finish without rough knurling, strong built-in magnet and robust steel clip for extra variants of use, constant light without flickering.

BICYCLE LIGHT

Made from aircraft-grade aluminium, compatible with durable quick-release mount.

- Powerful electronics provides impressive light output of 2500 lumens and record 200 days in Firefly mode
- Multicolor temperature and battery state indication for 25 years helps to find the flashlight in the dark
- Convenient wide beam of the TIR-optics, protected from scratches by tempered glass with anti-reflective coating

- Innovative technology allows to use any 18650 batteries and provides full protection against short circuit even in case of contact between magnetic connector and metal objects
- Active real-time temperature control to prevent overheating above 58 °C and warning indication of low battery level
- Total protection from water, dirt and dust – flashlight continues to work even at 10 meters depth
- Three Turbo modes for different purposes. Turbo3 with 2500 lm of overboost brightness to highlight a large area for a short period of time. Turbo2 with 1750 lm for several minutes of superbright output. Turbo1 with 870 lm for convenient prolonged use.



 **2500**
MAX LUMENS

 **131**
METERS THROW

 **200**
DAYS RUNTIME



RECHARGEABLE
Magnetic USB charger
and battery included



WHAT'S NEW IN WIZARD C2 PRO

Innovative optical system:

better light output, greater beam distance with comfortable wide spill

Maximum LED efficiency:

instead of 1800 lm in Wizard v3 Pro we achieved impressive

2500
LUMENS

Upgraded body:

optimized head design for improved heat dissipation and brighter light with more lumens

Enlarged side button:

softer and more comfortable pressing

New magnetic charger:

the flashlight charges 2 times faster

3 h 40 min



MAGNETIC USB CHARGER

Robust and water resistant magnetic connector



Innovated electronics and

firmware: extended runtimes and enhanced brightness

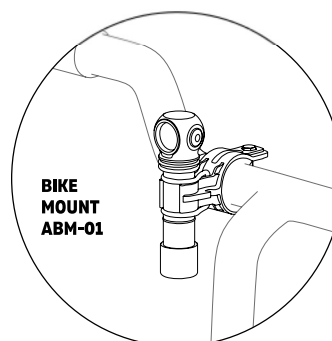
Simple operation by default:

easy to use right out of the box, possible to switch to professional advanced operation with 12 modes

Active real-time

temperature control:

when the temperature becomes close to 58 °C, brightness decreases, allowing to avoid flashlight and battery overheating and burns. Safe for industrial workers



BIKE MOUNT ABM-01

Double spring system:

reliable battery contact with the driver for additional protection against damage caused by fallings

Rich extended set: higher capacity battery 18650 Li-Ion 3500 mAh and ABM-01 bike mount included



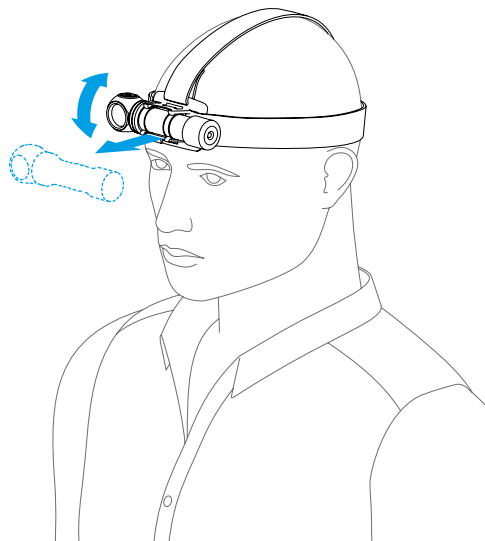
SET DESCRIPTION

1 - Flashlight, **2** - 18650 Li-Ion battery 3500 mAh, **3** - magnetic USB charger, **4** - headmount, **5** - clip, **6** - bicycle mount ABM-01, **7** - two spare O-rings, **8** - user manual

Headmount in the set ensures hands-free operation. No need to constantly adjust the angle of light: the beam follows your eyesight.

WIZARD C2 PRO

Headmount for direct lighting



Record runtime up to 200 days in low mode and more than 10 hours in comfortable medium mode suitable for prolonged repairs.

TIR-optics, protected by tempered glass with anti-reflective coating, gives convenient wide beam of light for bike rides.

WIZARD C2 PRO

Durable bike mount for challenging routes



The flashlight meets IP68 protection standard and continues to work even if dropped from 10 meters. Fallings into the mud or puddle don't affect its performance.

Strong magnet in the tailcap attaches multi flashlight to any metal surface, allowing to illuminate the maximum area around.

WIZARD C2 PRO

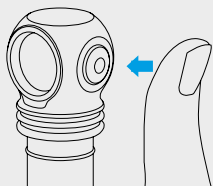
Strong magnet for attaching to metal surfaces

Operation

Before use: Tighten the tailcap.

GENERAL TYPE

Modes: Firefly1, Firefly2, Main modes, Turbo1, Turbo2 or Turbo3 (last used in Advanced, Turbo2 by default).



In OFF state:

1 click: To turn on the last used mode.

Press and hold: To start cycling through Firefly modes. Release to select. Keeping button pressed will start cycling through Main modes.

In ON state:

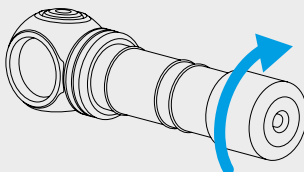
1 click: To turn off the flashlight.

Press and hold: To start cycling through Main modes from any mode. In Firefly1 cycling through Main modes starts after cycling through Firefly modes. Release to select.

2 clicks: To turn on Turbo mode from any mode. The second double click brings back last used mode.

ADVANCED TYPE

To switch between types of operation unscrew the tailcap to 1/4 while the flashlight is off, press the button and tighten the tailcap while keeping the button pressed.



The flashlight has 4 Sections of modes

[1] – Firefly modes [2] – Main modes
[3] – Turbo modes [4] – Special modes

In OFF state

Click: To turn on the last used mode.

Press and hold: To turn on Firefly1 mode in [Section 1].

In ON state

Click: To turn off the flashlight.

Press and hold: To start cycling through the modes of actual Section.

The same in OFF & ON states

2 clicks: To turn on Main mode [Section 2].
Another double click will switch modes

between chosen modes in [Section 1] and [Section 2].

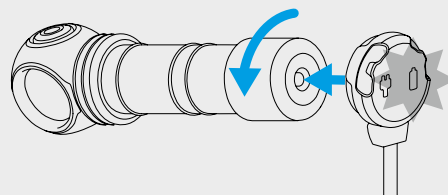
3 clicks: To turn on Turbo mode [Section 3].

4 clicks: To turn on Strobe mode [Section 4].

HOW TO TURN ON MAGNETIC CHARGER

1. FOR CHARGING

Unscrew the tailcap for one fourth. Plug in magnetic charger.



2. CHARGER INDICATION

- Red – charging is going on.
- Green – charging is finished.
- Orange – half current charging
- Orange blinking – bad contact or low USB adapter voltage
- Red blinking – unscrew the tailcap for one fourth.

3. AFTER CHARGING

Unplug the charger, tighten the tailcap.

SPECIFICATION

Wizard v3 Pro Magnet USB		Wizard v4 C2 Pro Magnet USB
LED/Optics	Cree XHP50 / TIR	Cree XHP50.2 / TIR
Light output, OTF lumens*	1800 lm	2500 lm
Beam distance*	130 m	131 m
Hotspot : Spill	70°:120°	
Brightness stabilization type	Full	
Number of modes	11	12
Modes / Runtimes	<div><div>Turbo3</div><div>Turbo2</div><div>Turbo1</div><div>Main3</div><div>Main2</div><div>Main1</div><div>Firefly3</div><div>Firefly2</div><div>Firefly1</div><div>Strobe3</div><div>Strobe2</div><div>Strobe1</div></div> <div><div>—</div><div>1800 lm / 1 h</div><div>900 lm / 1 h 42 min</div><div>390 lm / 4 h</div><div>165 lm / 10 h 30 min</div><div>30 lm / 50 h</div><div>5.5 lm / 12 d</div><div>1.5 lm / 40 d</div><div>0.15 lm / 200 d</div><div>1800 lm / 10 Hz / 2 h</div><div>1800 lm / 1 Hz / 5 h</div><div>165 lm / 1 Hz / 52h</div></div>	<div><div>2500 lm / 2 h 40 min (650 lm after 30 sec)</div><div>1750 lm / 2 h 45 min (650 lm after 2 min)</div><div>870 lm / 2 h 50 min (650 lm after 9 min)</div><div>370 lm / 5 h 15 min</div><div>160 lm / 12 h 15 min</div><div>45 lm / 43 h</div><div>6 lm / 12 d</div><div>1.5 lm / 40 d</div><div>0.15 lm / 200 d</div><div>2500 lm / 10 Hz / 5 h 45 min (650 lm after 100 sec)</div><div>2500 lm / 1 Hz / 12 h (650 lm after 9 min)</div><div>160 lm / 1 Hz / 55 h</div></div>
Power source	1x18650 Li-Ion	
Length / Ø head / body	108 mm / 29 mm / 20.4 mm	112 mm / 33 mm / 20.4 mm
Weight without / with battery	65 g / 115 g	
Submersion and Impact resistance	Depth up to 10 meters for 5 hours (IP68 standard). Height up to 10 meters	
Set description	18650 Li-Ion battery 3200 mAh, handband, magnetic USB charger, headmount, clip, 2 spare O-rings, user manual	18650 Li-Ion battery 3500 mAh, bicycle mount ABM-01, magnetic USB charger, headmount, clip, 2 spare O-rings, user manual

* The models are available with White or Warm LED. Light output for flashlights with Warm light is about 7% less, beam distance is about 3% less.

** All the above specifications are test results based on ANSI/NEMA FL1-2009 Standard



BENEFITS OF WORKING WITH ARMYTEK



Armytek Optoelectronics Inc. is a world famous manufacturer of high-tech flashlights, chargers and accessories. All Armytek products perfectly meet the buyer's requirements. We focus on quality and reliability: smart lineup allows us to thoroughly think through every detail before launching mass production.

HIGH PROFIT

More than 100% due to high margins. Favorable conditions and flexible prices for bulk orders are ensured by own factory in China.

SHIPPING

Warehouses around the world: the goods are always in stock and ready for shipment. Reduced costs and time of delivery, no additional custom fees required. Lower costs on shippings directly from the factory.

RELIABILITY

Minimum returns rate — less than 1%, (competitors' rate is 5-7%). All products go through quality checking on test stands. 24-hour testing is carried out.

LEGENDARY SERVICE

Full support and cooperation: from placing an order to warranty service. Professional issue management, fast repairs and exchange.

WARRANTY

Up to 10 years no hassle warranty.

OWN FACTORY

Every step of the process is controlled by our European specialists at the factory.

DEVELOPMENT

Head office in Europe. Team of highly qualified specialists from defence, aviation, space and other specialized industries.

EXPERIENCE

Expert in the fields of mechanics, optics and electronics. We specialize in development and manufacturing of flashlights and battery chargers since 2009.

COMPONENTS

Powerful Cree and Samsung LEDs, electronics by the USA and Japan, aircraft-grade aluminium, tempered glass, etc.

SMART LINEUP

Simple process of choosing a product, no bulky catalogs with a lot of similar variants. Only best models for client's needs.

NOVELTIES

Armytek produces innovative and the most technically advanced products in the world.

PRIVATE LABEL, OEM/ODM

Creating new products, modifying our production models and personalizing them according to your needs.

MARKETING SUPPORT

We provide all the necessary promotional materials: leaflets, booklets, catalogs, etc.

CLIENTS' NEEDS RESEARCH

We systematically gather feedback to make sure that our products completely fit clients' needs and requirements.

**Built to
exceed**

